



stainless steel submersible pump **KPS** 2 Poles 50 Hz

Salient Features

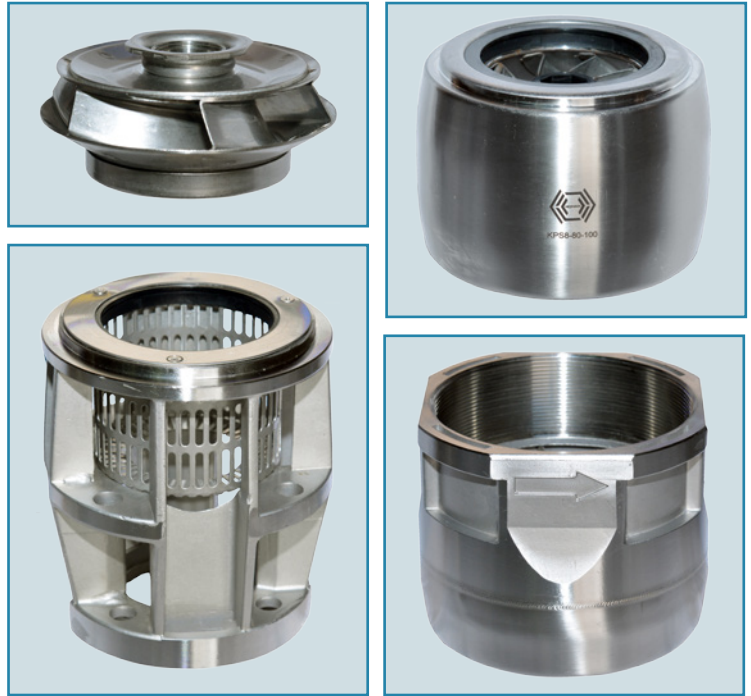
The new series of 6" and 8" stainless steel submersible pump KPS6 and KPS8 has been designed and produced according to the market requirement. Compact, reliable and hydraulic design are ensure the high overall efficiency and less energy consumption are making the low running cost of pumping system. Heavy duty casted stainless steel top and bottom and fabricated impellers and diffuser for corrosion resistance and for long and trouble free life.

Applications

- ▶ Domestic and industrial water supply
- ▶ Industrial cooling process
- ▶ Fire fighting systems
- ▶ Shower and running irrigation
- ▶ Agriculture and sprinkler systems
- ▶ Mining industry, drainage and de-watering

Operating Data

Capacity: upto 132 m³/h
 Head: upto 577 meters
 Power: upto 82 kW
 Minimum water temperature: -5 ° C
 Maximum water temperature: 50 ° C
 Maximum sand contents: 55 grm/m³
 Direction of rotation: CCW facing delivery side
 Minimum recommended head of water above pump suction: 1 meter



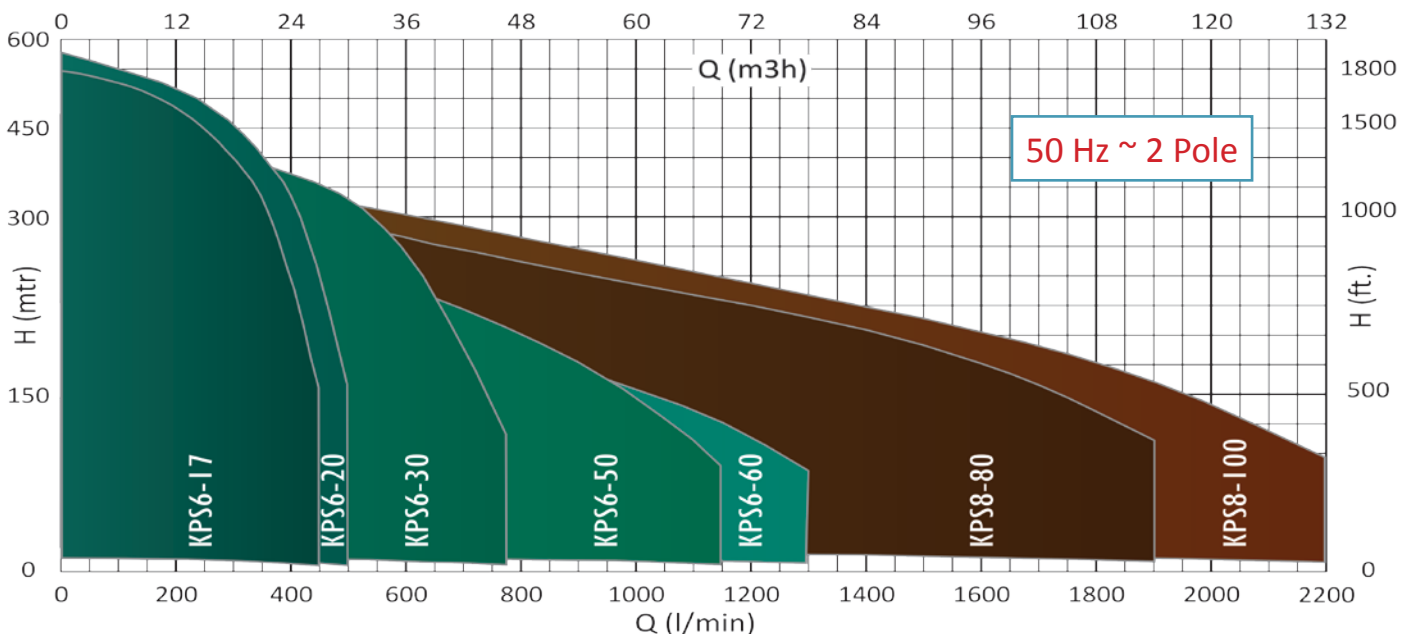
Type Identification

KPS6 - 50 / 12

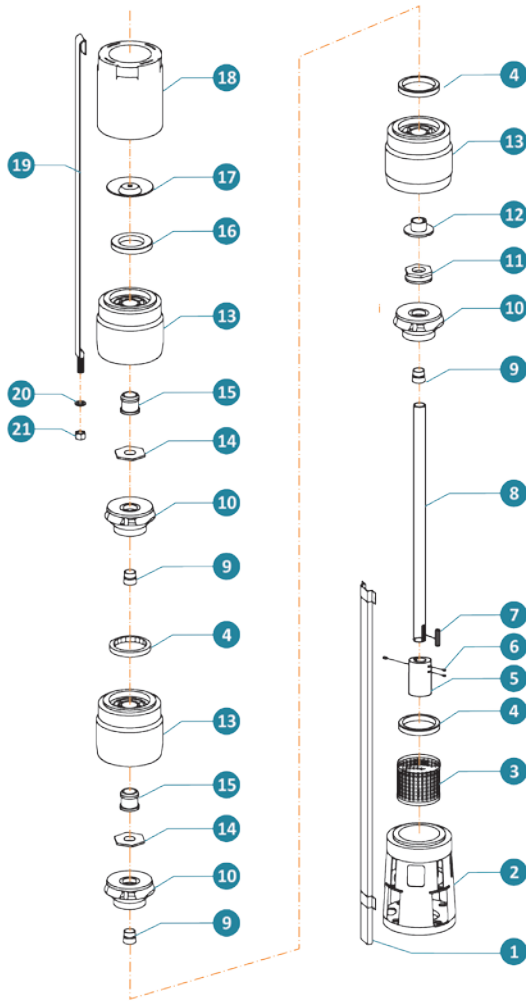
Komax Deepwell Submersible Pump
 Stainless Steel Version
 Nominal Pump Dia in Inches

Nos. of Impellers/Stages
 Nominal Flow in m³/h

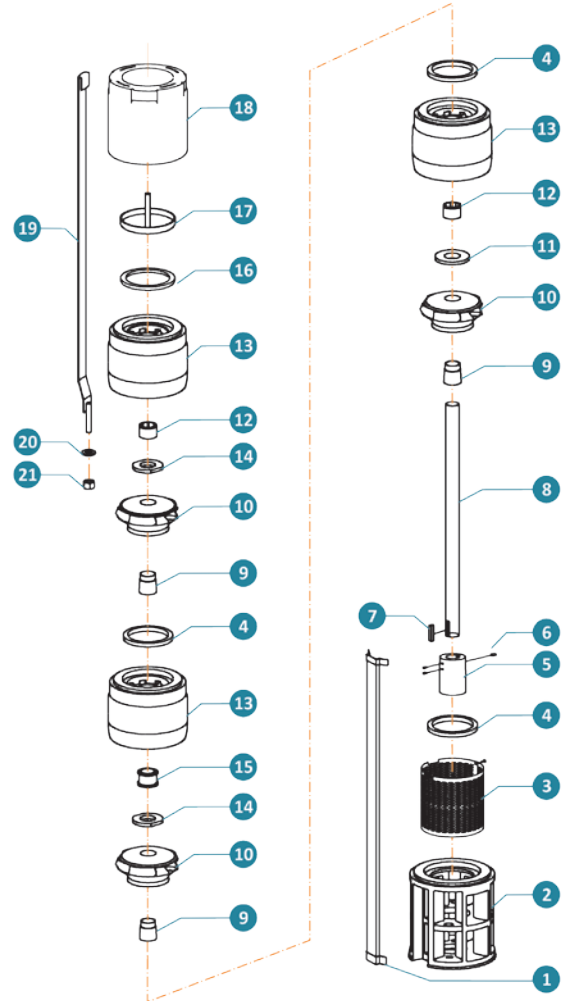
Group Performance Curve



Exploded View KPS6



Exploded View KPS8



Parts List KPS6

Pos.	Item Code	Part Name	Material
1	Item Code	Cable Guard	Stainless Steel AISI 316
2	Item Code	Suction Piece	Stainless Steel AISI 316
3	Item Code	Strainer / Screen	Stainless Steel AISI 316
4	Item Code	Wear Ring	Rubber
5	Item Code	Coupling	Stainless Steel AISI 316
6	Item Code	Coupling Screw	Stainless Steel AISI 316
7	Item Code	Shaft Lock	Stainless Steel AISI 316
8	Item Code	Pump Shaft	Stainless Steel AISI 316
9	Item Code	Split Cone	Stainless Steel AISI 316
10	Item Code	Impeller	Stainless Steel AISI 304
11	Item Code	Upthrust Washer	Stainless Steel AISI 316
12	Item Code	Bush CT Pad	Rubber
13	Item Code	Diffuser	Stainless Steel AISI 304
14	Item Code	Split Cone Nut	Stainless Steel AISI 316
15	Item Code	Bush Diffuser Chamber	Rubber
16	Item Code	Check Valve Seat	Rubber
17	Item Code	Check Valve Disc	Stainless Steel AISI 316
18	Item Code	Delivery Casing	Stainless Steel AISI 316
19	Item Code	Tie Rod / Strip	Stainless Steel AISI 316
20	Item Code	Washer	Stainless Steel AISI 316
21	Item Code	Nut	Stainless Steel AISI 316

Parts List KPS8

Pos.	Item Code	Part Name	Material
1	Item Code	Cable Guard	Stainless Steel AISI 316
2	Item Code	Suction Piece	Stainless Steel AISI 316
3	Item Code	Strainer / Screen	Stainless Steel AISI 316
4	Item Code	Wear Ring	Rubber
5	Item Code	Coupling	Stainless Steel AISI 316
6	Item Code	Coupling Screw	Stainless Steel AISI 316
7	Item Code	Shaft Lock	Stainless Steel AISI 316
8	Item Code	Pump Shaft	Stainless Steel AISI 316
9	Item Code	Split Cone	Stainless Steel AISI 316
10	Item Code	Impeller	Stainless Steel AISI 304
11	Item Code	Upthrust Washer	Stainless Steel AISI 316
12	Item Code	Bush CT Pad	Rubber
13	Item Code	Diffuser	Stainless Steel AISI 304
14	Item Code	Split Cone Nut	Stainless Steel AISI 316
15	Item Code	Bush Diffuser Chamber	Rubber
16	Item Code	Check Valve Seat	Rubber
17	Item Code	Check Valve Disc	Stainless Steel AISI 316
18	Item Code	Delivery Casing	Stainless Steel AISI 316
19	Item Code	Tie Rod / Strip	Stainless Steel AISI 316
20	Item Code	Washer	Stainless Steel AISI 316
21	Item Code	Nut	Stainless Steel AISI 316



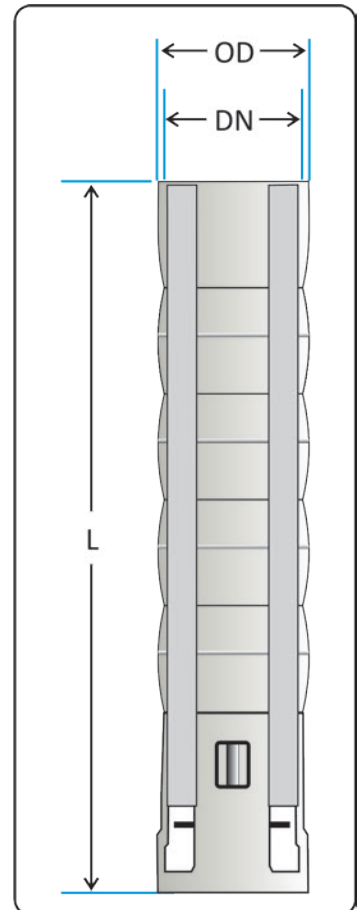
6" stainless steel submersible pump KPS6-17

50 Hz	PUMP SELECTION CHART - 2 POLE / 50 Hz												
	MOTOR		Q (l/min)	0	50	100	150	200	250	300	350	400	450
PUMP TYPE	HP	KW	Q (m3h)	0	3	6	9	12	15	18	21	24	27
KPS6-17/1	1,5	1,1	Head in meters	11	11	11	10	10	9	8	7	5	3
KPS6-17/2	2	1,5		22	22	21	21	20	19	17	14	10	6
KPS6-17/3	3	2,2		34	33	32	31	30	28	25	21	16	10
KPS6-17/4	4	3		45	44	43	42	40	37	34	28	21	13
KPS6-17/6	5,5	4		67	66	64	62	60	56	50	42	31	19
KPS6-17/9	7,5	5,5		101	99	96	94	90	84	76	63	47	29
KPS6-17/11	10	7,5		123	121	118	114	110	103	92	77	58	36
KPS6-17/12	10	7,5		134	132	128	125	120	112	101	84	63	39
KPS6-17/15	12,5	9,3		168	165	161	156	150	140	126	105	79	49
KPS6-17/18	15	11		201	198	193	187	180	169	151	126	94	58
KPS6-17/21	17,5	13		235	231	225	218	210	197	176	147	110	68
KPS6-17/25	20	15		280	275	268	260	250	234	210	175	131	81
KPS6-17/28	25	18,5		313	308	300	291	280	262	235	197	147	91
KPS6-17/30	25	18,5		335	330	321	312	300	281	252	211	157	97
KPS6-17/33	30	22		369	363	353	343	329	309	277	232	173	107
KPS6-17/36	30	22		402	396	385	374	359	337	302	253	189	117
KPS6-17/40	35	26		447	440	428	416	399	375	336	281	210	130
KPS6-17/43	35	26		481	473	460	447	429	403	361	302	225	140
KPS6-17/47	40	30		525	517	503	488	469	440	395	330	246	153
KPS6-17/50	40	30		559	549	535	520	499	468	420	351	262	162

TECHNICAL DETAIL									PUMP WEIGHT (KG)
PUMP MODEL		MOTOR			PUMP DIMENSIONS (MM)				
TYPE	STAGE	HP	KW	SIZE	OD1	OD2	DN	L	
KPS6-17/1	1	1,5	1,1	4" NEMA	146		3"	316	4
KPS6-17/2	2	2	1,5	4" NEMA	146		3"	361	5
KPS6-17/3	3	3	2,2	4" NEMA	146		3"	406	6
KPS6-17/4	4	4	3	4" NEMA	146		3"	451	7
KPS6-17/6	6	5,5	4	4" NEMA	146		3"	541	9
KPS6-17/9	9	7,5	5,5	4" NEMA	146		3"	676	12
KPS6-17/11	11	10	7,5	6" NEMA	148	151	3"	766	15
KPS6-17/12	12	10	7,5	6" NEMA	148	151	3"	811	16
KPS6-17/15	15	12,5	9,3	6" NEMA	148	151	3"	946	19
KPS6-17/18	18	15	11	6" NEMA	148	151	3"	1081	22
KPS6-17/21	21	17,5	13	6" NEMA	148	151	3"	1216	26
KPS6-17/25	25	20	15	6" NEMA	148	151	3"	1396	30
KPS6-17/28	28	25	18,5	6" NEMA	148	151	3"	1531	33
KPS6-17/30	30	25	18,5	6" NEMA	148	151	3"	1621	35
KPS6-17/33	33	30	22	6" NEMA	148	151	3"	1756	39
KPS6-17/36	36	30	22	6" NEMA	148	151	3"	1891	42
KPS6-17/40	40	35	26	6" NEMA	148	151	3"	2071	46
KPS6-17/43	43	35	26	6" NEMA	148	151	3"	2206	50
KPS6-17/47	47	40	30	6" NEMA	148	151	3"	2386	54
KPS6-17/50	50	40	30	6" NEMA	148	151	3"	2521	57

OD1 = Outer dia with one (1) cable guard.

OD2 = Outer dia with two (2) cable guards.





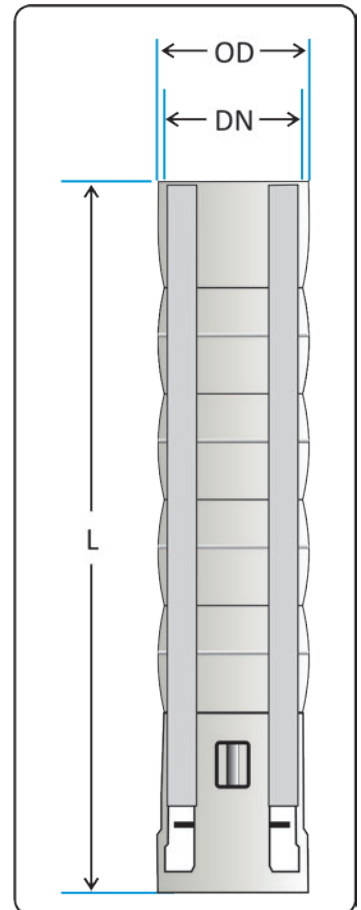
6" stainless steel submersible pump KPS6-20

50 Hz	PUMP SELECTION CHART - 2 POLE / 50 Hz												
	MOTOR		Q (l/min)	0	80	150	200	250	300	350	400	450	500
PUMP TYPE	HP	KW	Q (m3h)	0	4,8	9	12	15	18	21	24	27	30
KPS6-20/1	1,5	1,1	Head in meters	12	11	11	10	10	9	8	7	5	3
KPS6-20/2	2	1,5		23	22	21	21	20	18	16	14	10	6
KPS6-20/3	3	2,2		35	33	32	31	30	28	25	20	15	9
KPS6-20/4	4	3		46	44	43	41	40	37	33	27	20	12
KPS6-20/6	5,5	4		70	67	64	62	59	55	49	41	30	19
KPS6-20/8	7,5	5,5		93	89	85	83	79	74	66	55	41	25
KPS6-20/10	10	7,5		116	111	107	104	99	92	82	68	51	31
KPS6-20/11	10	7,5		128	122	118	114	109	101	90	75	56	34
KPS6-20/13	12,5	9,3		151	144	139	135	129	120	107	89	66	40
KPS6-20/16	15	11		186	178	171	166	158	147	131	109	81	49
KPS6-20/19	17,5	13		221	211	203	197	188	175	156	130	96	59
KPS6-20/22	20	15		255	244	235	228	218	203	181	150	112	68
KPS6-20/25	25	18,5		290	278	267	259	247	230	205	170	127	77
KPS6-20/27	25	18,5		313	300	288	279	267	249	222	184	137	83
KPS6-20/30	30	22		348	333	320	311	297	276	246	205	152	93
KPS6-20/32	30	22		372	355	342	331	317	295	263	218	162	99
KPS6-20/35	35	26		406	389	374	362	346	323	287	239	178	108
KPS6-20/38	35	26		441	422	406	393	376	350	312	259	193	117
KPS6-20/41	40	30		476	455	438	424	406	378	336	280	208	127
KPS6-20/44	40	30		511	489	470	455	436	405	361	300	223	136

TECHNICAL DETAIL									PUMP WEIGHT (KG)
PUMP MODEL		MOTOR			PUMP DIMENSIONS (MM)				
TYPE	STAGE	HP	KW	SIZE	OD1	OD2	DN	L	
KPS6-20/1	1	1,5	1,1	4" NEMA	146		3"	316	4
KPS6-20/2	2	2	1,5	4" NEMA	146		3"	361	5
KPS6-20/3	3	3	2,2	4" NEMA	146		3"	406	6
KPS6-20/4	4	4	3	4" NEMA	146		3"	451	7
KPS6-20/6	6	5,5	4	4" NEMA	146		3"	496	8
KPS6-20/8	8	7,5	5,5	4" NEMA	146		3"	631	11
KPS6-20/10	10	10	7,5	6" NEMA	148	151	3"	721	13
KPS6-20/11	11	10	7,5	6" NEMA	148	151	3"	766	15
KPS6-20/13	13	12,5	9,3	6" NEMA	148	151	3"	856	17
KPS6-20/16	16	15	11	6" NEMA	148	151	3"	991	20
KPS6-20/19	19	17,5	13	6" NEMA	148	151	3"	1126	23
KPS6-20/22	22	20	15	6" NEMA	148	151	3"	1261	27
KPS6-20/25	25	25	18,5	6" NEMA	148	151	3"	1396	30
KPS6-20/27	27	25	18,5	6" NEMA	148	151	3"	1486	32
KPS6-20/30	30	30	22	6" NEMA	148	151	3"	1621	35
KPS6-20/32	32	30	22	6" NEMA	148	151	3"	1711	38
KPS6-20/35	35	35	26	6" NEMA	148	151	3"	1846	41
KPS6-20/38	38	35	26	6" NEMA	148	151	3"	1981	44
KPS6-20/41	41	40	30	6" NEMA	148	151	3"	2116	48
KPS6-20/44	44	40	30	6" NEMA	148	151	3"	2251	51

OD1 = Outer dia with one (1) cable guard.

OD2 = Outer dia with two (2) cable guards.





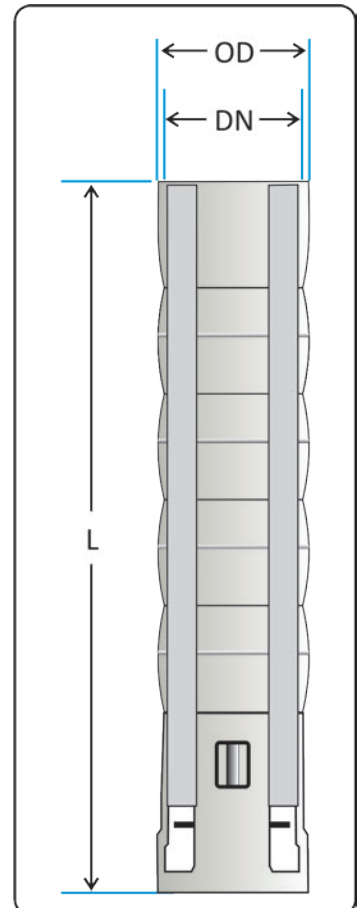
6" stainless steel submersible pump KPS6-30

50 Hz	PUMP SELECTION CHART - 2 POLE / 50 Hz											
	MOTOR		Q (l/min)	0	100	200	300	400	500	600	700	780
PUMP TYPE	HP	KW	Q (m3h)	0	6	12	18	24	30	36	42	46,8
KPS6-30/1	1,5	1,1	Head in meters	13	12	12	11	10	9	7	5	3
KPS6-30/2	3	2,2		26	24	23	22	20	18	15	10	6
KPS6-30/3	4	3		38	37	35	33	30	27	22	16	9
KPS6-30/4	5,5	4		51	49	46	44	40	36	29	21	12
KPS6-30/5	7,5	5,5		64	61	58	54	50	44	37	26	15
KPS6-30/6	10	7,5		77	73	69	65	60	53	44	31	18
KPS6-30/7	10	7,5		89	85	81	76	70	62	51	36	22
KPS6-30/9	12,5	9,3		115	110	104	98	90	80	66	47	28
KPS6-30/11	15	11		140	134	127	120	110	98	80	57	34
KPS6-30/13	17,5	13		166	158	150	141	130	116	95	67	40
KPS6-30/15	20	15		191	183	174	163	151	133	110	78	46
KPS6-30/18	25	18,5		230	219	208	196	181	160	131	93	55
KPS6-30/20	30	22		255	244	231	218	201	178	146	104	62
KPS6-30/22	30	22		281	268	254	239	221	196	161	114	68
KPS6-30/24	35	26		306	292	278	261	241	213	175	124	74
KPS6-30/26	35	26		332	317	301	283	261	231	190	135	80
KPS6-30/28	40	30		357	341	324	305	281	249	205	145	86
KPS6-30/30	40	30		383	365	347	327	301	267	219	156	92
KPS6-30/34	50	37		434	414	393	370	341	302	248	176	105
KPS6-30/37	50	37		472	451	428	403	371	329	270	192	114

TECHNICAL DETAIL									PUMP WEIGHT (KG)
PUMP MODEL		MOTOR			PUMP DIMENSIONS (MM)				
TYPE	STAGE	HP	KW	SIZE	OD1	OD2	DN	L	
KPS6-30/1	1	1,5	1,1	4" NEMA	146		3"	329	4
KPS6-30/2	2	3	2,2	4" NEMA	146		3"	385	5
KPS6-30/3	3	4	3	4" NEMA	146		3"	442	6
KPS6-30/4	4	5,5	4	4" NEMA	146		3"	498	8
KPS6-30/5	5	7,5	5,5	4" NEMA	146		3"	555	9
KPS6-30/6	6	10	7,5	6" NEMA	148	151	3"	611	11
KPS6-30/7	7	10	7,5	6" NEMA	148	151	3"	667	12
KPS6-30/9	9	12,5	9,3	6" NEMA	148	151	3"	779	15
KPS6-30/11	11	15	11	6" NEMA	148	151	3"	891	17
KPS6-30/13	13	17,5	13	6" NEMA	148	151	3"	1003	20
KPS6-30/15	15	20	15	6" NEMA	148	151	3"	1115	23
KPS6-30/18	18	25	18,5	6" NEMA	148	151	3"	1283	27
KPS6-30/20	20	30	22	6" NEMA	148	151	3"	1395	29
KPS6-30/22	22	30	22	6" NEMA	148	151	3"	1507	32
KPS6-30/24	24	35	26	6" NEMA	148	151	3"	1619	35
KPS6-30/26	26	35	26	6" NEMA	148	151	3"	1731	38
KPS6-30/28	28	40	30	6" NEMA	148	151	3"	1843	40
KPS6-30/30	30	40	30	6" NEMA	148	151	3"	1955	43
KPS6-30/34	34	50	37	6" NEMA	148	151	3"	2179	48
KPS6-30/37	37	50	37	6" NEMA	148	151	3"	2347	52

OD1 = Outer dia with one (1) cable guard.

OD2 = Outer dia with two (2) cable guards.

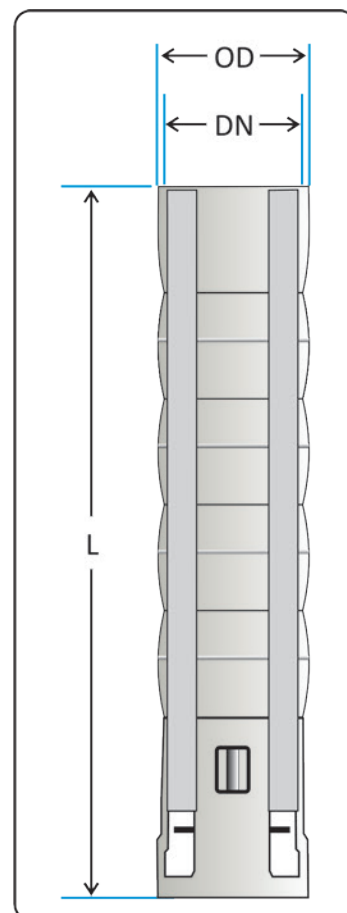




6" stainless steel submersible pump KPS6-50

50 Hz	PUMP SELECTION CHART - 2 POLE / 50 HZ												
	MOTOR		Q (l/min)	0	150	300	450	600	700	800	900	1000	1150
PUMP TYPE	HP	KW	Q (m3h)	0	9	18	27	36	42	48	54	60	69
KPS6-50/1	3	2,2	Head in meters	13	13	12	11	10	10	9	8	6	4
KPS6-50/2	5,5	4		27	26	25	23	21	19	17	15	13	8
KPS6-50/3	7,5	5,5		40	39	37	34	31	29	26	23	19	11
KPS6-50/4	10	7,5		54	52	49	46	42	39	35	31	25	15
KPS6-50/5	12,5	9,3		67	65	62	57	52	48	44	38	32	19
KPS6-50/6	15	11		81	78	74	69	62	58	52	46	38	23
KPS6-50/7	17,5	13		94	91	86	80	73	67	61	54	45	27
KPS6-50/8	20	15		108	104	98	91	83	77	70	61	51	31
KPS6-50/9	20	15		121	117	111	103	94	87	79	69	57	34
KPS6-50/10	25	18,5		135	130	123	114	104	96	87	77	64	38
KPS6-50/11	25	18,5		148	143	135	126	114	106	96	84	70	42
KPS6-50/12	30	22		162	156	148	137	125	116	105	92	76	46
KPS6-50/13	30	22		175	169	160	149	135	125	113	100	83	50
KPS6-50/14	35	26		189	182	172	160	146	135	122	107	89	54
KPS6-50/15	35	26		202	195	185	171	156	144	131	115	96	57
KPS6-50/16	40	30		216	208	197	183	167	154	140	123	102	61
KPS6-50/18	40	30		243	235	222	206	187	173	157	138	115	69
KPS6-50/19	40	30		256	248	234	217	198	183	166	146	121	73
KPS6-50/22	50	37		297	287	271	251	229	212	192	169	140	84
KPS6-50/23	50	37		310	300	283	263	239	221	201	176	146	88

TECHNICAL DETAIL									PUMP WEIGHT (KG)
PUMP MODEL		MOTOR			PUMP DIMENSIONS (MM)				
TYPE	STAGE	HP	KW	SIZE	OD1	OD2	DN	L	
KPS6-50/1	1	3	2,2	4" NEMA	146		4"	384	5
KPS6-50/2	2	5,5	4	4" NEMA	146		4"	497	7
KPS6-50/3	3	7,5	5,5	4" NEMA	146		4"	610	9
KPS6-50/4	4	10	7,5	6" NEMA	148	151	4"	723	12
KPS6-50/5	5	12,5	9,3	6" NEMA	148	151	4"	836	14
KPS6-50/6	6	15	11	6" NEMA	148	151	4"	949	16
KPS6-50/7	7	17,5	13	6" NEMA	148	151	4"	1062	19
KPS6-50/8	8	20	15	6" NEMA	148	151	4"	1175	21
KPS6-50/9	9	20	15	6" NEMA	148	151	4"	1288	23
KPS6-50/10	10	25	18,5	6" NEMA	148	151	4"	1401	26
KPS6-50/11	11	25	18,5	6" NEMA	148	151	4"	1514	28
KPS6-50/12	12	30	22	6" NEMA	148	151	4"	1627	30
KPS6-50/13	13	30	22	6" NEMA	148	151	4"	1740	33
KPS6-50/14	14	35	26	6" NEMA	148	151	4"	1853	35
KPS6-50/15	15	35	26	6" NEMA	148	151	4"	1966	37
KPS6-50/16	16	40	30	6" NEMA	148	151	4"	2079	40
KPS6-50/18	18	40	30	6" NEMA	148	151	4"	2305	44
KPS6-50/19	19	40	30	6" NEMA	148	151	4"	2418	47
KPS6-50/22	22	50	37	6" NEMA	148	151	4"	2757	54
KPS6-50/23	23	50	37	6" NEMA	148	151	4"	2870	56



OD1 = Outer dia with one (1) cable guard.

OD2 = Outer dia with two (2) cable guards.



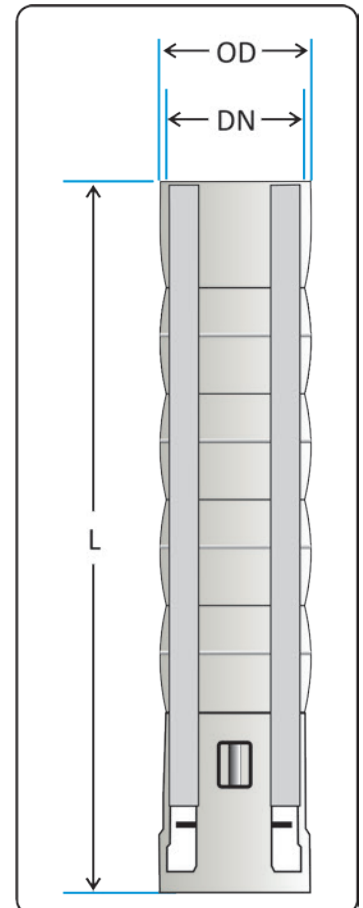


6" stainless steel submersible pump

KPS6-60

50 Hz	PUMP SELECTION CHART - 2 POLE / 50 HZ											
	MOTOR		Q (l/min)	0	200	300	550	700	850	1000	1150	1300
PUMP TYPE	HP	KW	Q (m3h)	0	12	18	33	42	51	60	69	78
KPS6-60/1	3	2,2	Head in meters	14	14	13	12	11	10	9	7	5
KPS6-60/2	5,5	4		28	27	26	24	22	19	17	14	9
KPS6-60/3	10	7,5		41	41	38	36	33	29	26	21	14
KPS6-60/4	12,5	9,3		55	54	51	48	43	39	34	28	19
KPS6-60/5	15	11		69	68	64	59	54	49	43	35	24
KPS6-60/6	17,5	13		83	81	77	71	65	58	51	42	28
KPS6-60/7	20	15		97	95	89	83	76	68	60	49	33
KPS6-60/8	25	18,5		110	108	102	95	87	78	68	56	38
KPS6-60/9	25	18,5		124	122	115	107	98	88	77	63	43
KPS6-60/10	30	22		138	135	128	119	109	97	85	70	47
KPS6-60/11	30	22		152	149	140	131	119	107	94	77	52
KPS6-60/12	35	26		166	162	153	143	130	117	102	84	57
KPS6-60/13	35	26		179	176	166	155	141	127	111	91	61
KPS6-60/14	40	30		193	189	179	167	152	136	119	98	66
KPS6-60/15	40	30		207	203	191	178	163	146	128	105	71
KPS6-60/16	50	37		221	216	204	190	174	156	136	112	76
KPS6-60/17	50	37		235	230	217	202	185	166	145	119	80
KPS6-60/18	50	37		249	243	230	214	195	175	153	126	85

TECHNICAL DETAIL									PUMP WEIGHT (KG)
PUMP MODEL		MOTOR			PUMP DIMENSIONS (MM)				
TYPE	STAGE	HP	KW	SIZE	OD1	OD2	DN	L	
KPS6-60/1	1	3	2,2	4" NEMA	146		4"	384	5
KPS6-60/2	2	5,5	4	4" NEMA	146		4"	497	7
KPS6-60/3	3	10	7,5	6" NEMA	148	151	4"	610	10
KPS6-60/4	4	12,5	9,3	6" NEMA	148	151	4"	723	12
KPS6-60/5	5	15	11	6" NEMA	148	151	4"	836	15
KPS6-60/6	6	17,5	13	6" NEMA	148	151	4"	949	18
KPS6-60/7	7	20	15	6" NEMA	148	151	4"	1062	20
KPS6-60/8	8	25	18,5	6" NEMA	148	151	4"	1175	23
KPS6-60/9	9	25	18,5	6" NEMA	148	151	4"	1288	25
KPS6-60/10	10	30	22	6" NEMA	148	151	4"	1401	28
KPS6-60/11	11	30	22	6" NEMA	148	151	4"	1514	30
KPS6-60/12	12	35	26	6" NEMA	148	151	4"	1627	33
KPS6-60/13	13	35	26	6" NEMA	148	151	4"	1740	35
KPS6-60/14	14	40	30	6" NEMA	148	151	4"	1853	38
KPS6-60/15	15	40	30	6" NEMA	148	151	4"	1966	40
KPS6-60/16	16	50	37	6" NEMA	148	151	4"	2079	43
KPS6-60/17	17	50	37	6" NEMA	148	151	4"	2192	45
KPS6-60/18	18	50	37	6" NEMA	148	151	4"	2305	48



OD1 = Outer dia with one (1) cable guard.

OD2 = Outer dia with two (2) cable guards.

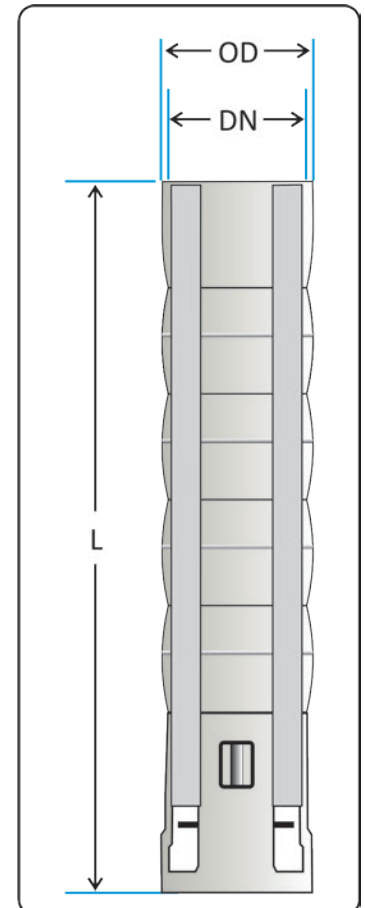




8" stainless steel submersible pump KPS8-80

50 Hz	PUMP SELECTION CHART - 2 POLE / 50 HZ												
	MOTOR		Q (l/min)	0	250	500	700	900	1100	1300	1500	1700	1900
PUMP TYPE	HP	KW	Q (m3h)	0	15	30	42	54	66	78	90	102	114
KPS8-80/1	7,5	5,5	Head in meters	20	20	18	17	16	14	13	12	10	7
KPS8-80/2	12,5	9,3		40	39	36	34	31	29	27	24	19	14
KPS8-80/3	17,5	13		60	59	54	50	47	43	40	35	29	20
KPS8-80/4	25	18,5		81	78	72	67	62	58	53	47	39	27
KPS8-80/5	30	22		101	98	91	84	78	72	66	59	48	34
KPS8-80/6	35	26		121	118	109	101	94	87	80	71	58	41
KPS8-80/7	40	30		141	137	127	118	109	101	93	82	68	47
KPS8-80/8	50	37		161	157	145	134	125	116	106	94	78	54
KPS8-80/9	50	37		181	177	163	151	140	130	119	106	87	61
KPS8-80/10	60	45		201	196	181	168	156	145	133	118	97	68
KPS8-80/11	60	45		222	216	199	185	171	159	146	129	107	74
KPS8-80/12	75	56		242	235	217	202	187	173	159	141	116	81
KPS8-80/13	75	56		262	255	236	218	203	188	172	153	126	88
KPS8-80/14	80	60		282	275	254	235	218	202	186	165	136	95
KPS8-80/15	80	60		302	294	272	252	234	217	199	177	145	101
KPS8-80/16	90	67		322	314	290	269	249	231	212	188	155	108
KPS8-80/17	100	75		342	333	308	286	265	246	225	200	165	115
KPS8-80/18	100	75		363	353	326	302	281	260	239	212	175	122

TECHNICAL DETAIL									PUMP WEIGHT (KG)
PUMP MODEL		MOTOR			PUMP DIMENSIONS (MM)				
TYPE	STAGE	HP	KW	SIZE	OD1	OD2	DN	L	
KPS8-80/1	1	7,5	5,5	6" NEMA	180	188	5"	414	13
KPS8-80/2	2	12,5	9,3	6" NEMA	180	188	5"	518	16
KPS8-80/3	3	17,5	13	6" NEMA	180	188	5"	622	19
KPS8-80/4	4	25	18,5	6" NEMA	180	188	5"	726	22
KPS8-80/5	5	30	22	6" NEMA	180	188	5"	830	26
KPS8-80/6	6	35	26	6" NEMA	180	188	5"	934	29
KPS8-80/7	7	40	30	6" NEMA	180	188	5"	1038	32
KPS8-80/8	8	50	37	6" NEMA	180	188	5"	1142	36
KPS8-80/9	9	50	37	6" NEMA	180	188	5"	1246	39
KPS8-80/10	10	60	45	8" NEMA	198	205	5"	1350	42
KPS8-80/11	11	60	45	8" NEMA	198	205	5"	1454	46
KPS8-80/12	12	75	56	8" NEMA	198	205	5"	1558	49
KPS8-80/13	13	75	56	8" NEMA	198	205	5"	1662	52
KPS8-80/14	14	80	60	8" NEMA	198	205	5"	1766	55
KPS8-80/15	15	80	60	8" NEMA	198	205	5"	1870	59
KPS8-80/16	16	90	67	8" NEMA	198	205	5"	1974	62
KPS8-80/17	17	100	75	8" NEMA	198	205	5"	2078	65
KPS8-80/18	18	100	75	8" NEMA	198	205	5"	2182	69



OD1 = Outer dia with one (1) cable guard.

OD2 = Outer dia with two (2) cable guards.

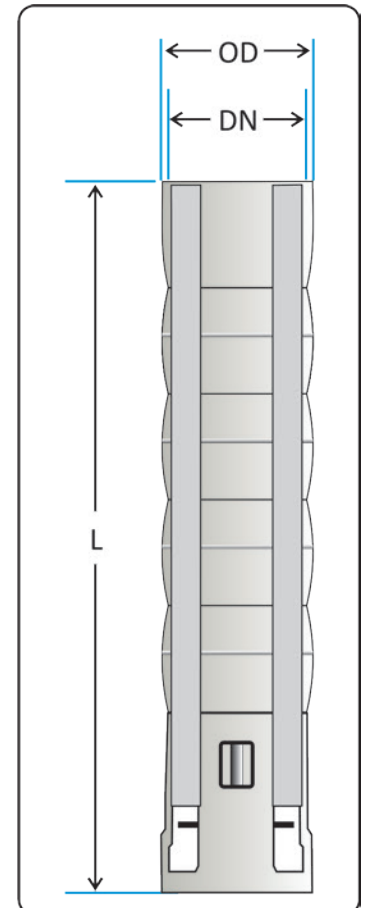




8" stainless steel submersible pump KPS8-100

50 Hz	PUMP SELECTION CHART - 2 POLE / 50 HZ												
	MOTOR		Q (l/min)	0	300	600	850	1100	1350	1600	1800	2000	2200
PUMP TYPE	HP	KW	Q (m3h)	0	18	36	51	66	81	96	108	120	132
KPS8-100/1	7,5	5,5	Head in meters	21	20	19	17	16	14	13	11	9	6
KPS8-100/2	12,5	9,3		41	40	37	34	31	28	25	22	17	12
KPS8-100/3	17,5	13		62	61	56	52	47	42	38	33	26	17
KPS8-100/4	25	18,5		83	81	75	69	63	57	50	43	35	23
KPS8-100/5	30	22		104	101	93	86	78	71	63	54	44	29
KPS8-100/6	35	26		124	121	112	103	94	85	75	65	52	35
KPS8-100/7	40	30		145	142	131	120	110	99	88	76	61	40
KPS8-100/8	50	37		166	162	150	137	125	113	100	87	70	46
KPS8-100/9	60	45		187	182	168	155	141	127	113	98	78	52
KPS8-100/10	60	45		207	202	187	172	157	142	125	109	87	58
KPS8-100/11	75	56		228	223	206	189	172	156	138	120	96	64
KPS8-100/12	75	56		249	243	224	206	188	170	150	130	104	69
KPS8-100/13	80	60		270	263	243	223	204	184	163	141	113	75
KPS8-100/14	80	60		290	283	262	240	219	198	175	152	122	81
KPS8-100/15	90	67		311	304	280	258	235	212	188	163	131	87
KPS8-100/16	100	75		332	324	299	275	251	227	200	174	139	92
KPS8-100/17	100	75		353	344	318	292	266	241	213	185	148	98
KPS8-100/18	110	82		373	364	336	309	282	255	225	196	157	104

TECHNICAL DETAIL									PUMP WEIGHT (KG)
PUMP MODEL		MOTOR			PUMP DIMENSIONS (MM)				
TYPE	STAGE	HP	KW	SIZE	OD1	OD2	DN	L	
KPS8-100/1	1	7,5	5,5	6" NEMA	180	188	5"	414	13
KPS8-100/2	2	12,5	9,3	6" NEMA	180	188	5"	518	16
KPS8-100/3	3	17,5	13	6" NEMA	180	188	5"	622	19
KPS8-100/4	4	25	18,5	6" NEMA	180	188	5"	726	23
KPS8-100/5	5	30	22	6" NEMA	180	188	5"	830	26
KPS8-100/6	6	35	26	6" NEMA	180	188	5"	934	29
KPS8-100/7	7	40	30	6" NEMA	180	188	5"	1038	33
KPS8-100/8	8	50	37	6" NEMA	180	188	5"	1142	36
KPS8-100/9	9	60	45	8" NEMA	198	205	5"	1246	39
KPS8-100/10	10	60	45	8" NEMA	198	205	5"	1350	43
KPS8-100/11	11	75	56	8" NEMA	198	205	5"	1454	46
KPS8-100/12	12	75	56	8" NEMA	198	205	5"	1558	49
KPS8-100/13	13	80	60	8" NEMA	198	205	5"	1662	53
KPS8-100/14	14	80	60	8" NEMA	198	205	5"	1766	56
KPS8-100/15	15	90	67	8" NEMA	198	205	5"	1870	60
KPS8-100/16	16	100	75	8" NEMA	198	205	5"	1974	63
KPS8-100/17	17	100	75	8" NEMA	198	205	5"	2078	66
KPS8-100/18	18	110	82	8" NEMA	198	205	5"	2182	70



OD1 = Outer dia with one (1) cable guard.

OD2 = Outer dia with two (2) cable guards.

